



JSS INSTITUTE OF EDUCATION

(Recognized by the NCTE and Affiliated to university Mysore, Mysore
Sakleshpur-573134, PB No 26, Hassan Dist.

Email:jssioebdskp@gmail.com website:<http://jssonline.org>

Phone No: 97405 91647

Date: 16.08.2023

DIET VISIT

District Institute of Education and Training – DIET, Hassan was established in the year 1993. It is approved by NCTE (National Council for Teacher Education) and affiliated by Mangalore University.



Hassan DIET is a District Institute of Education and Training Centre which is located in Tavaradevarakoppalu, Salagame Road, SH-21, Hassan District, Karnataka. Hassan DIET have been established a centre of guidance for Educational institutions and schools of the districts. It was approved by the Department of State Educational Research and Training (DSERT), Bangalore, Karnataka.

It also works as a platform of research and experimental work in Education. It also organizes programmes to train the teachers for the new innovations. Purpose of Hassan DIET is to educate and conduct different kinds of programme to the teaching faculty in order to improve the quality of primary and secondary school education.

The application form is available on the placement cell of DIET support students in making the right career choice and



enables employers in taking the right hiring decisions during recruitment. From 1st to 5th standard teachers should be qualified with D.Ed. From 6th to 9th teaching staffs should complete B.Ed course. From 10th to 12th class teacher should be Masters Holder with B.Ed.

The Main functions of DIET are training (both of induction levels as well as continuing varieties), resource support (extension / guidance, development of materials, aids, evaluation tools and etc). "To provide academic and resource support at the grass-root level for the success of the various strategies and programmes being undertaken in the areas of elementary, secondary and adult education.

Krishne Gowda sir, senior faculty explained about DIET and its main 7 wings.



They are,

1. Pre service teacher education.
2. In service field instruction innovation and co-ordination.
3. District resource unit.
4. Curriculum material development and evaluation.
5. Education technology.
6. Work experience.
7. Planning and management.

Objectives of DIET

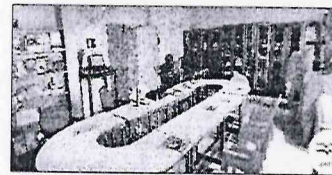
1. To facilitate the elementary education, school education, SSA and RMSA to make every school a resourceful learning organization.
2. To implement child centre curriculum syllabus for standard 1st to 12th.
3. To function as a district resource centre, extended training centre and district unit for SCERT.

4. To serve as a District disseminating centre of educational research and innovations.
5. To scout the outstanding classroom process and disseminate best practices among all the teachers.
6. To help school guarantee universalization of elementary and secondary education to all the students who joined government and aided schools.
7. To facilitate school heads to become instructional supervisors and ensure the quality of learning at all levels of schooling.
8. To provide resource support to SSA and RMSA in designing training programme and providing training to district level trainers and teacher educators.

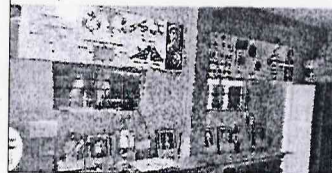
Important functions of DIET are,

1. Training and Orientation for Elementary, Primary and Secondary School Teachers at the cluster and block levels.
2. Resource support – Providing educational services, Resources and advise to Elementary, Primary and Secondary School and adult education centres in the district level in the form of extension services through its actions and interactions. As a resource centre for Instructors and Teachers.
3. Provide teaching and learning materials and evaluation tools for all sectors of education field.
4. Functioning as evaluation centre for formal and non-formal educational institutions.
5. Provide resource support to state agencies in the form of data, software etc.
6. Provide advance technology resource support.
7. Conducting and examinations like TET and CET, organizing district level science exhibition.

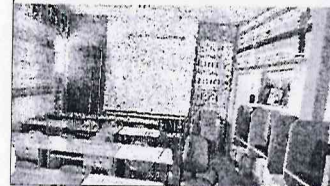
LIBRARY



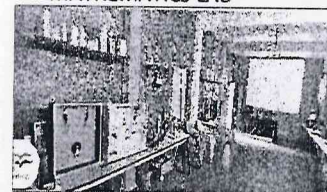
SCIENCE LAB



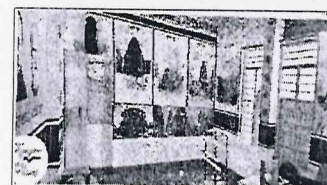
COMPUTER LAB



MATHEMATICS LAB



HUMANITIES LAB



8. Visiting and monitoring the schools which are belongs to Hassan District and providing the fundamental facilities which are needed by the schools.
9. It acts as a model agency of centralized admission of B.Ed and D.Ed courses.


The Education Commission has observed, "Of all the factors that influence the quality of education... the quality, competence and character of teachers are undoubtedly the most significant". But these in turn depend substantially on the quality of training and other support provided to them. The importance of the last input mentioned in the preceding para viz, academic and resource support can therefore hardly be over emphasized. Until the adoption of the NPE, this support in the area of elementary and secondary education was being provided largely at the national and state levels only by institutions like NCERT, NIEPA and SCERTs.

"The concept of a National System of education implies that, up to a given level, all students, irrespective of caste, creed, location or sex, have access to education of a comparable quality says the NPE. It goes on say "to promote equality, it will be necessary to provide equal opportunity to all not only in access, but also in the condition for success".



FIRST YEAR B.Ed STUDENTS GROUP PHOTO WITH DIET STAFF




PRINCIPAL
J.S.S. Institute of Education
P.B. 26, SAKALESHPUR-573 134
Hassan Dist